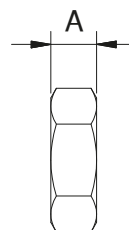
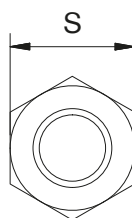
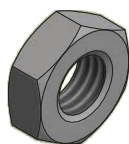


Dadi

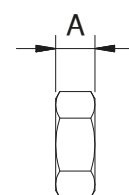
Normale UNI 5588 DIN 934



| CODICE | CLASSE | FILETTO | ALTEZZA A | CHIAVE S | MATERIALE |
|----------|--------|---------|-----------|----------|-----------------|
| UT30255 | 8(6s) | M8 | 6,5 | 5 | ACCIAIO ZINCATO |
| UT30256 | 8(6s) | M10 | 8 | 6 | ACCIAIO ZINCATO |
| UT30257 | 8(6s) | M12 | 10 | 7 | ACCIAIO ZINCATO |
| UT30258 | 8(6s) | M16 | 13 | 8 | ACCIAIO ZINCATO |
| UT30289A | A2-70 | M10 | 8 | 6 | INOX |
| UT30289B | A2-70 | M12 | 10 | 7 | INOX |

Dadi

Basso UNI 5589 DIN936



| CODICE | CLASSE | FILETTO | ALTEZZA A | CHIAVE S | MATERIALE |
|----------|--------|---------|-----------|----------|-----------------|
| UT30287A | 8(6s) | M4 | 3 | 7 | ACCIAIO ZINCATO |